

Bassoon

Suite No. 6

for winds

Christiaan Janssen

Allegro non troppo, poco scherzando

5

12

21

30

35

mf

mp *p*

mp

cresc. *f*

mf *mp*

pp

A

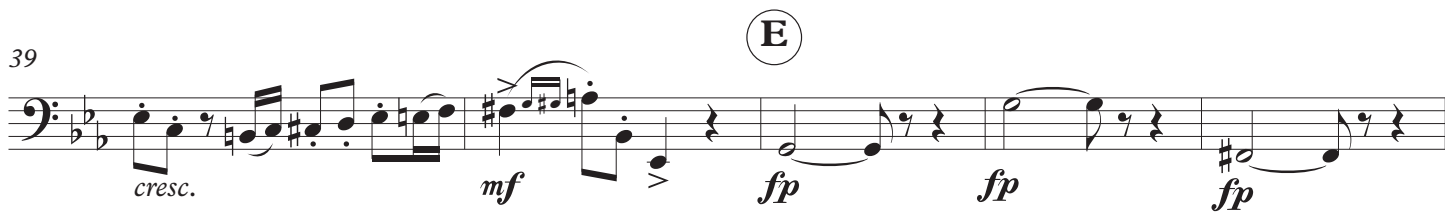
B

C

D

3

39



44



50



55

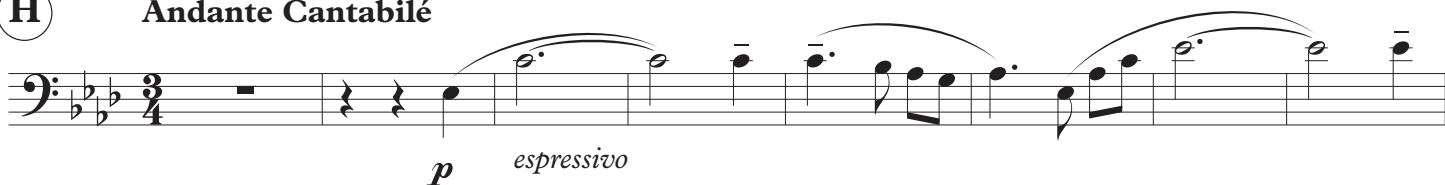


60

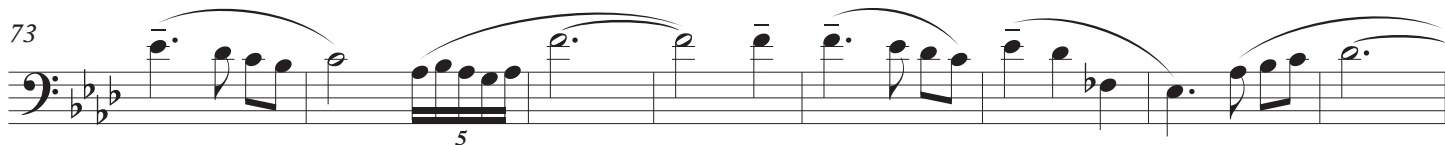


(H)

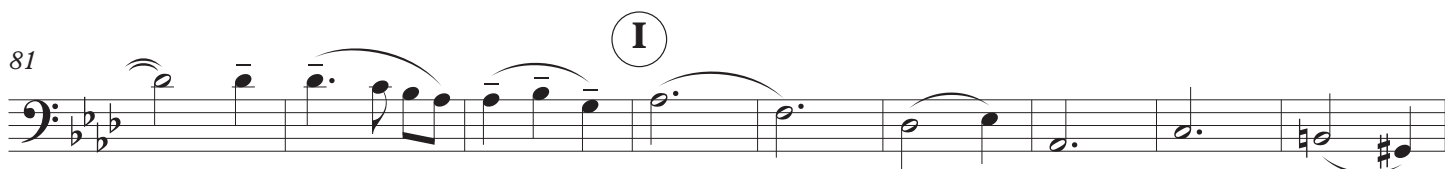
Andante Cantabile



73



81



90



97

f

103

p *dim.* *pp*

110

poco rit. *cresc.* *f*

119

f

127

dim. *p*

135

poco rit. *L* *Vivo* *f* *f*

141

f *M* *mp*

148

f

154

N *7* *8* *f*

173

[illegible]

179

179

p *fp* *mp* **P**

186

186

p *fp*

Q

The first staff of the musical score is in bass clef with a key signature of one flat (B-flat). It contains 12 measures. The notes are: B-flat (quarter), A-flat (quarter), G (quarter), F (quarter), E (quarter), D (quarter), C (quarter), B-flat (quarter), A-flat (quarter), G (quarter), F (quarter), and E (quarter). The dynamics are marked as *f* (forte) at the beginning, *f* in the middle, and *mp* (mezzo-piano) at the end. There are also some slurs and accents over the notes.

®

200

Musical notation for Example 6-10, showing a single staff with a bass clef and key signature of one flat. The melody consists of eighth notes and rests.

207

[illegible]

215

215

The musical score for the bass line of 'The Rose Tree' is written on a single staff with a bass clef and a key signature of one flat (B-flat). The tempo is marked 'Allegretto' and the time signature is 3/4. The score begins with a treble clef and a key signature of one flat, then changes to a bass clef. The melody consists of eighth and sixteenth notes, with some measures containing triplets. A fermata is placed over a measure containing a quarter note and a half note. The piece ends with a double bar line and a repeat sign.

f

221

221

f *dim.*

228

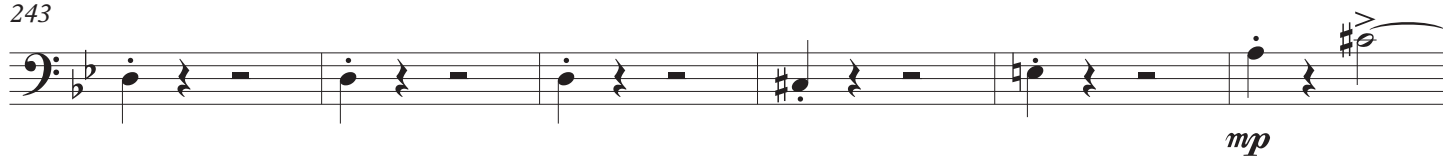
228

dim. *pp*

p

T 8

243



249



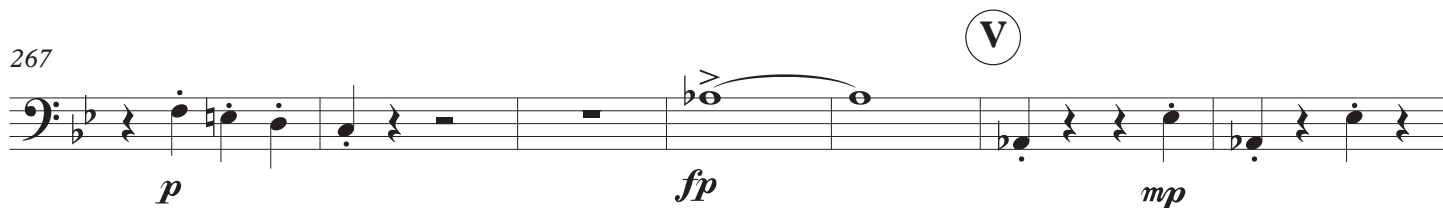
254



260



267



274



281



(X)



294



Y

300



306



mf

ff

313



p

ff

Z



mf

mf

cresc.

327



ff

332



ff