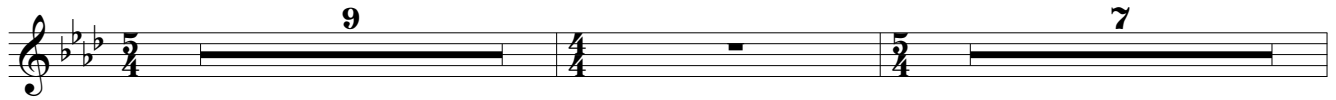


# The infinity of landscape

Paul Frankhuijzen  
2019

Soprano Sax

Tempo ♩ = 74

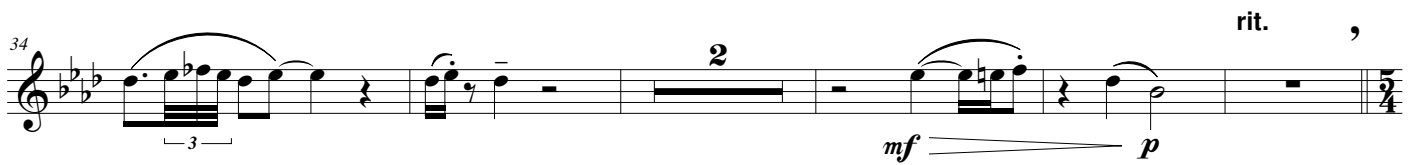


Tempo ♩ = 70



Pochtino tempo (c.a. ♩ = 76)

scherzando delicato



Tempo primo

♩ = 74

cantabile con espressive

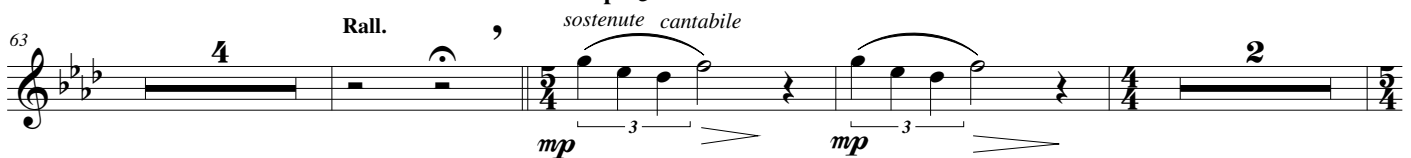
Pochtino tempo

c.a. ♩ = 76



Tempo ♩ = 56

sostenute cantabile



## Soprano Sax

79 **Tempo** ♩ = 56 **2** **3** **5**

89 ♩ = 56 (Oboe) Fltz. **Tempo** ♩ = 70 *scorrevole*

*mp* *f* *mp* *mp* *p* *mf* *p*

97 *p* *mf* *p*

103 *(p)* *mp* *p* *pp*

**Tempo primo** ♩ = 74 *echo*

110 *mf* *mp* *p*

**Poch. rit.** **Rall.**