

Tenor Saxophone

# Kalamos fuge

for reed quintet

Maja Tica

**Con brio** ♩.=70

The musical score for 'The Rose Tree' is written for a single melodic line on a treble clef staff. The key signature is one sharp (F#), and the time signature is 12/8. The melody begins with a forte (*f*) dynamic, marked with a hairpin that tapers to mezzo-forte (*mf*) by the end of the first phrase. The first phrase consists of a descending eighth-note scale: G4, F#4, E4, D4, C4, B3, A3, G3. This is followed by a whole rest. The second phrase is an ascending eighth-note scale: G3, A3, B3, C4, D4, E4, F#4, G4. The melody concludes with a final whole rest. The score includes dynamic markings (*f* and *mf*) and hairpin symbols to indicate the volume changes.

4

Example 1 shows a melodic line in treble clef with a key signature of two sharps (F# and C#). The line consists of three measures. The first measure starts with a half rest, followed by a quarter note G4, a quarter note A4, and a quarter note B4. The second measure starts with a quarter note A4, a quarter note G4, a quarter note F#4, and a quarter note E4. The third measure starts with a quarter note D4, a quarter note C#4, a quarter note B3, and a quarter note A3. The dynamics are marked as *f* (forte) at the beginning of the first measure, *mf* (mezzo-forte) at the beginning of the second measure, and *p* (piano) at the beginning of the third measure. There are also slurs and accents over the notes in the first and third measures.

7

*f* *mf*

9


*mf* *f*

[illegible]

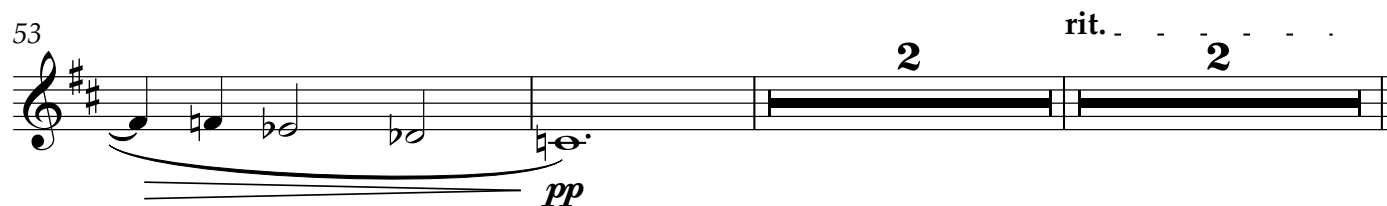
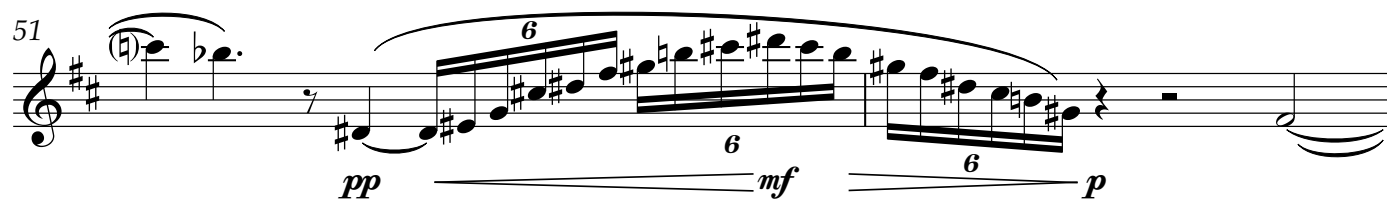
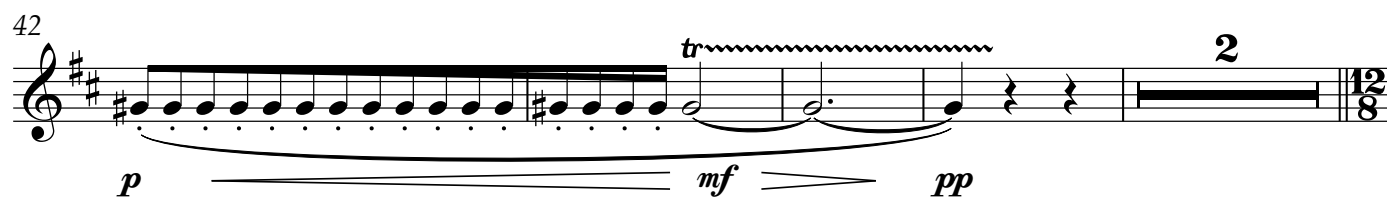
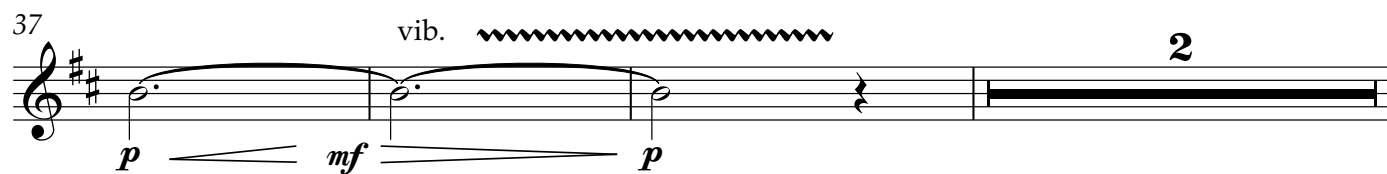
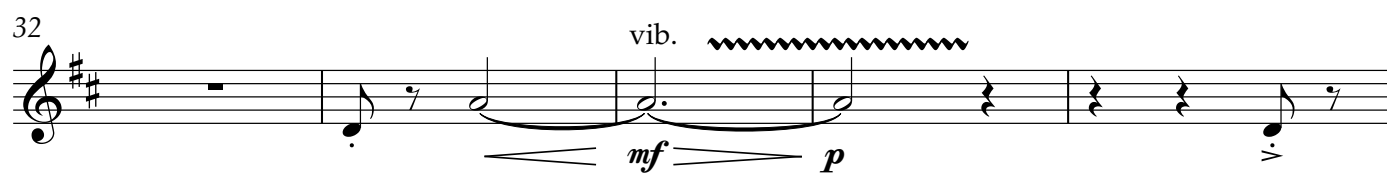
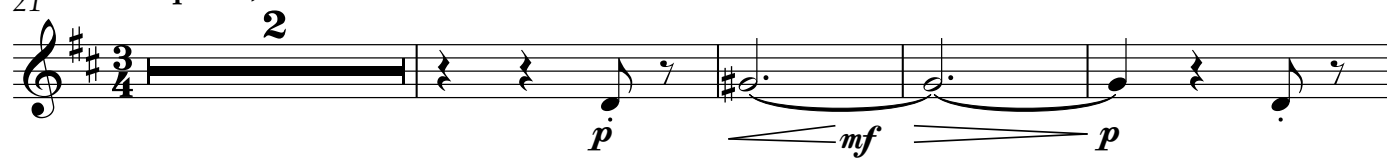
14

*pp* *p*

17

vib. 

3/4

21 **Tranquillo, tenebroso** 

59 **Con dolore, mesto** ♩.=50

**4**

*pp*

65 **accel.**

*p*

68 **Con brio** ♩.=70

*p* *mf* *p* *f*

71

*mf* *p* *mf*

74

*p* *mf* *p*

77

*mf*

80 **vib.**

*pp*