

Evelin Seppar

Oh you

Clarinet (B Flat)

Oi sina	<i>Oh you</i>
mu pesa	<i>my nest</i>

Oi sina	<i>Oh you</i>
mu muna	<i>my egg</i>

Oi sina	<i>Oh you</i>
mu lind	<i>my bird</i>

Jaan Kross
from *Vihm teeb toredaid asju* (1966–1969)
translated by the composer

Oh you

EVELIN SEPPAR

Gioioso ♩ = 132

A

8

p *mp*

12

16

p

B

20

mp

26

30

C

33

p *mp*

38

42

[illegible]

86 F

mp mf

This staff contains measures 86 to 90. It begins with a treble clef and a key signature of one flat. A box containing the letter 'F' is positioned above the staff. The music features a melodic line with eighth and sixteenth notes, some beamed together. A slur covers measures 86 through 89, with dynamics *mp* and *mf* indicated below. Measure 90 continues the melodic pattern.

90

This staff contains measures 90 to 93. The melodic line continues with eighth and sixteenth notes, some beamed together. Measure 93 ends with a double bar line.

94

This staff contains measures 94 to 97. The melodic line continues with eighth and sixteenth notes, some beamed together. Measure 97 ends with a double bar line.

98

This staff contains measures 98 to 101. The melodic line continues with eighth and sixteenth notes, some beamed together. Measure 101 ends with a double bar line.

102

mp poco

This staff contains measures 102 to 105. The melodic line continues with eighth and sixteenth notes, some beamed together. A slur covers measures 102 through 105, with dynamics *mp* and *poco* indicated below. Measure 105 ends with a double bar line.

106

mp

This staff contains measures 106 to 109. The melodic line continues with eighth and sixteenth notes, some beamed together. A slur covers measures 106 through 109, with dynamics *mp* indicated below. Measure 109 ends with a double bar line.

110 G

mf

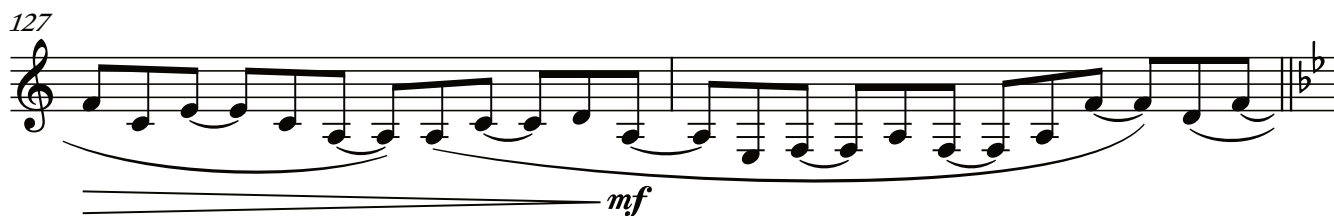
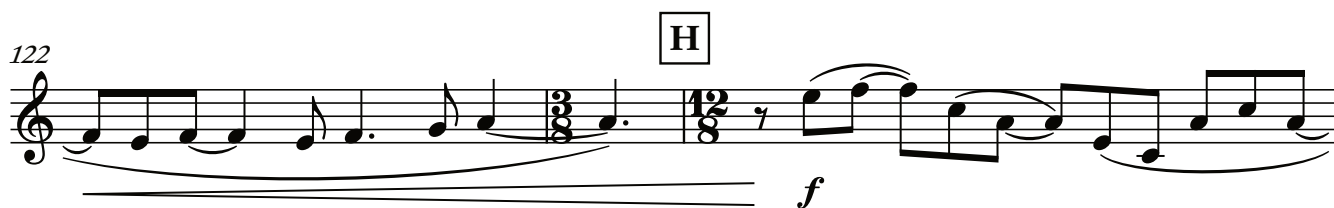
This staff contains measures 110 and 111. The time signature changes to 12/8. The melodic line continues with eighth and sixteenth notes, some beamed together. A slur covers measures 110 and 111, with dynamics *mf* indicated below. Measure 111 ends with a double bar line.

112

This staff contains measures 112 and 113. The melodic line continues with eighth and sixteenth notes, some beamed together. Measure 113 ends with a double bar line.

114

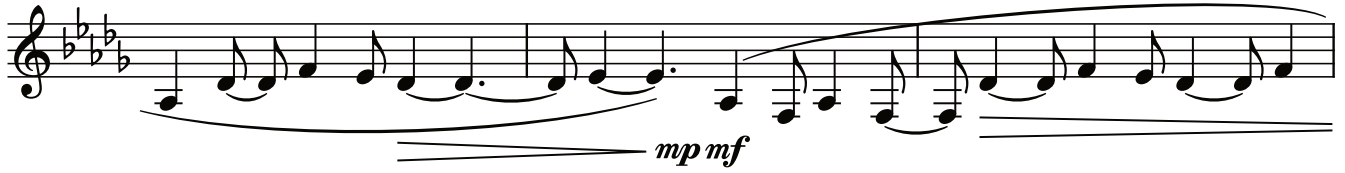
This staff contains measures 114 and 115. The melodic line continues with eighth and sixteenth notes, some beamed together. Measure 115 ends with a double bar line.



137



140



143



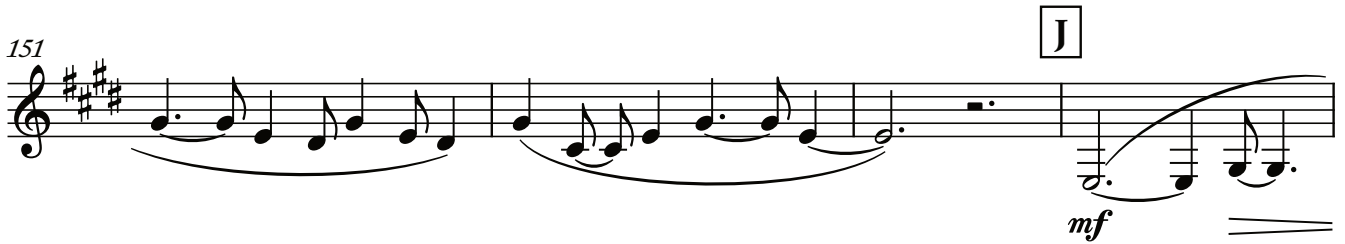
145



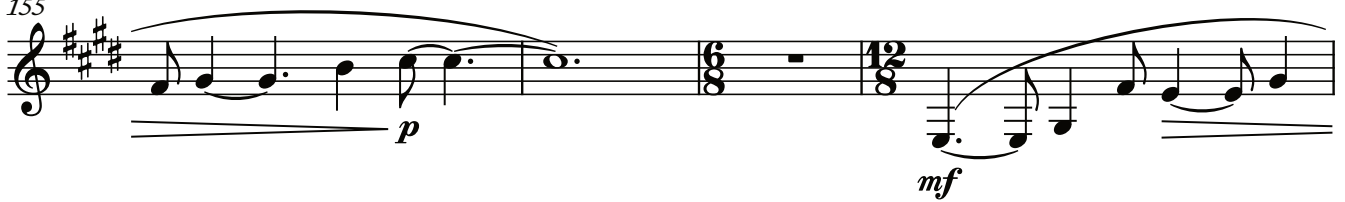
148



151



155



159

