

And Water...for Wind Quintet
Composer : Wim Kuijt

♩ = 85

The bass line of 'The Rose Tree' is written in 3/4 time, key of B-flat major. It consists of four measures. The first measure contains a half note B-flat and a quarter note G. The second measure contains a half note F and a quarter note E. The third measure contains a half note D and a quarter note C. The fourth measure contains a half note B-flat and a quarter note A. The melody is written in treble clef on a single line.

The bass line of 'The Rose Tree' is written in 3/4 time, key of B-flat major. It consists of four measures, each containing a triplet of eighth notes. The notes are: B-flat, A, and G in the first measure; F, E, and D in the second measure; C, B-flat, and A in the third measure; and G, F, and E in the fourth measure. The melody is written on a single staff with a bass clef.

The bass line of 'The Rose Tree' is written in 3/4 time with a key signature of one flat (B-flat). The melody consists of the following notes: G2 (quarter), A2 (quarter), Bb2 (quarter), A2 (quarter), G2 (quarter), F2 (quarter), E2 (quarter), D2 (half). The final note is a whole note D2.

♩ = 85

[illegible]

♩ = 95

The bass line of 'The Rose Tree' is written in G major (one flat) and 2/4 time. It consists of 16 measures. The notes are: G2 (quarter), A2 (quarter), B2 (quarter), A2 (quarter), G2 (quarter), F#2 (quarter), E2 (quarter), D2 (quarter), C2 (quarter), B1 (quarter), A1 (quarter), G1 (quarter), F#1 (quarter), E1 (quarter), D1 (quarter), C1 (quarter). The melody is written in treble clef and consists of 16 measures. The notes are: G4 (quarter), A4 (quarter), B4 (quarter), A4 (quarter), G4 (quarter), F#4 (quarter), E4 (quarter), D4 (quarter), C4 (quarter), B3 (quarter), A3 (quarter), G3 (quarter), F#3 (quarter), E3 (quarter), D3 (quarter), C3 (quarter). The melody and bass line are played in unison.

mf *mp*

[illegible] \triangleright

p

4.Flow

♩ = 95

68

4



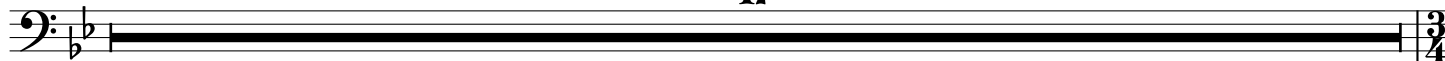
82

5. Again

♩ = 90

87

17



6. Quiet, Sparkling

♩ = 70

104

2



115



7. Transparent

♩ = 80

127



143



8. The wind is blowing again

♩ = 80

156



169



9.And Wind Again

♩ = 80

173

blow carefully

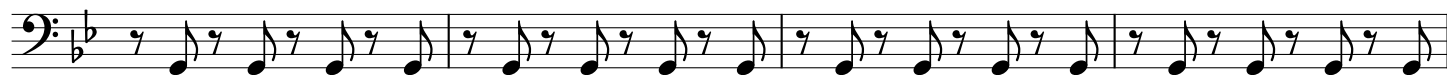


177



183

No blowing, only press the keys forcefully



187

